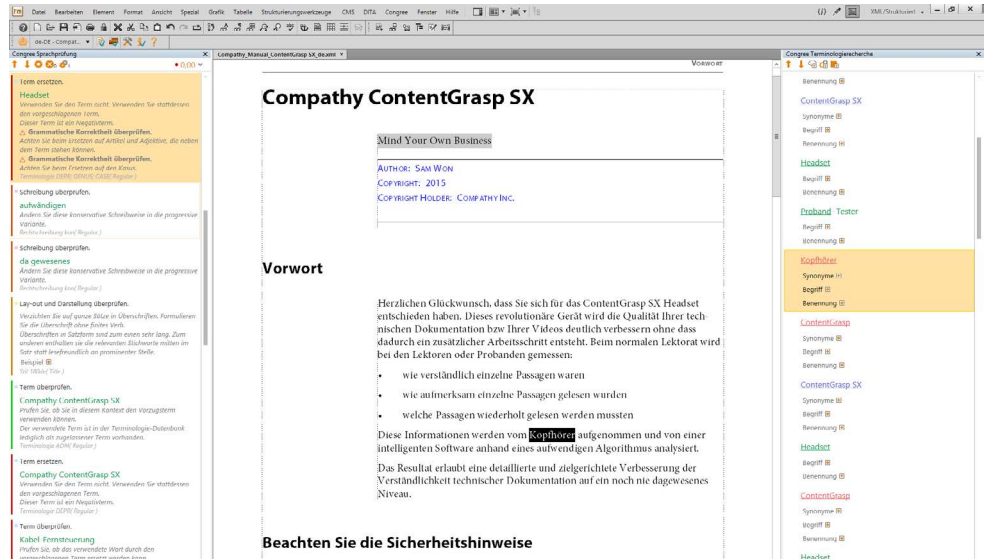


# Congree for Adobe® FrameMaker® and FrameMaker® XML Author

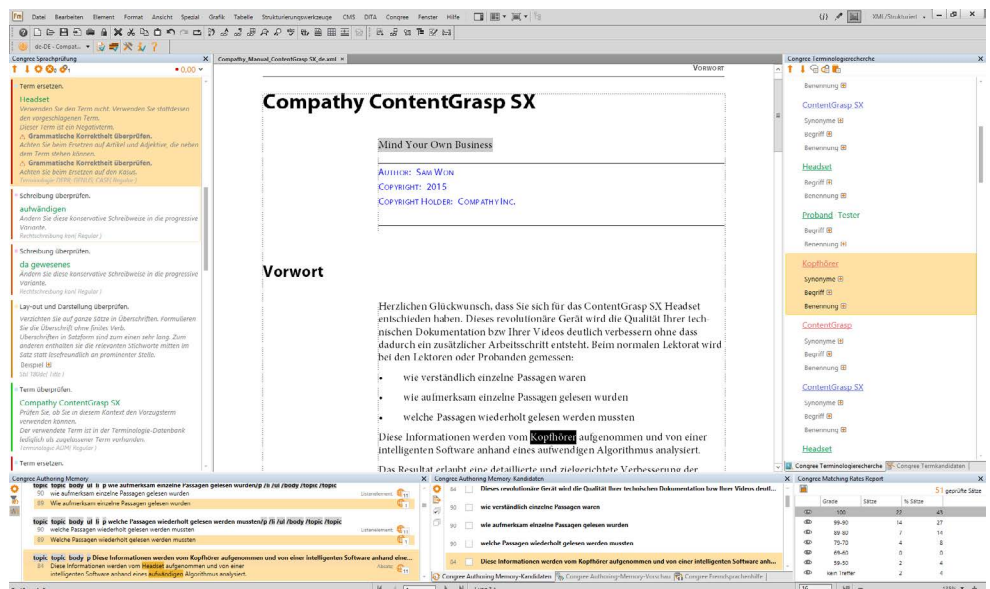
## Our Philosophy

Congree is available as a plugin for various text editors. Congree blends in perfectly with the user interface of the text editors. At the same time, the program functions and basic operating concept remain consistent and are standardized in all text editors. In this way, you can always expect the same Congree quality, regardless of which text editor you use. An overview of all supported versions and system requirements of the plugin is available in the manual "System Requirements and Installation Scenarios".

## Overview Based on FrameMaker® 12



» Example application scenario: Language Check and Terminology Research



» Display of additional Congree functions

# Congree for Adobe® FrameMaker® and FrameMaker® XML Author

## ■ Usability

### ... for Both Document Types: Structured and Unstructured

With Congree for Adobe® FrameMaker®, you can work both in the structured mode and in the unstructured mode. This means that you can process numerous file types with Congree. Congree delivers check results for all types of formats, from unstructured formats (.fm, .mif, .book) to the structured .fm format to all XML formats (.xml).

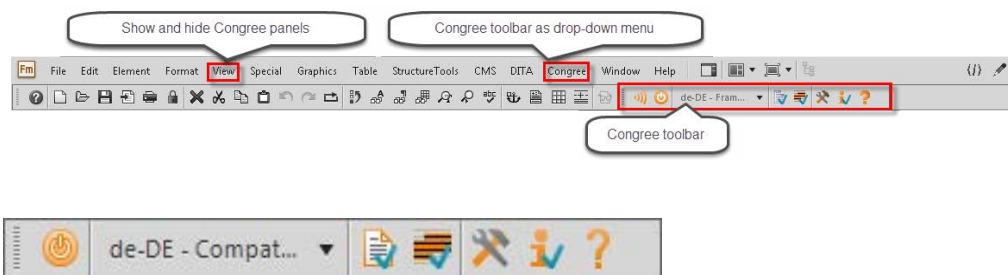
## ■ Integration of Congree

### ... in the FrameMaker® Toolbar

The Congree Authoring Server is integrated seamlessly in your Adobe® FrameMaker® as a plugin. Following the installation of Congree, the default FrameMaker® toolbar will feature three additional elements:

- » The classic Congree toolbar
- » The drop-down menu "Congree" with toolbar functionality
- » The menu subitem "Congree" in the "View" menu

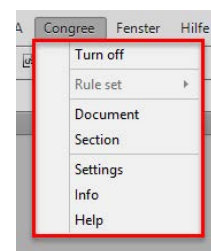
### The Congree Toolbar



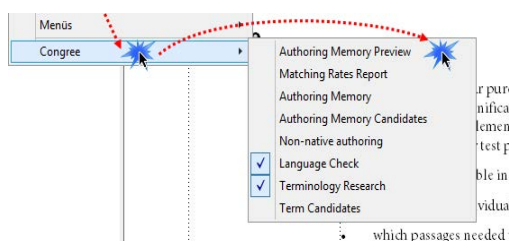
- » The Congree toolbar

### Showing the Panels via "View"

Using the Congree toolbar, you can switch Congree on and off, log in and out, select rule sets for the check, check text, and configure your Congree Authoring Client. If you want to hide the Congree toolbar in order to unclutter your editor interface, you can do so via the default menu item "View" - "Toolbars". Still, you do not need to do without the functions of the Congree toolbar, which you can easily access via the drop-down menu "Congree":



You can flexibly show or hide all Congree panels depending on your duties or under consideration of your workflows. This can be done by means of the additional menu item "Congree" in the default drop-down menu "View".

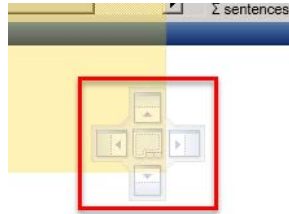


# Congree for Adobe® FrameMaker® and FrameMaker® XML Author

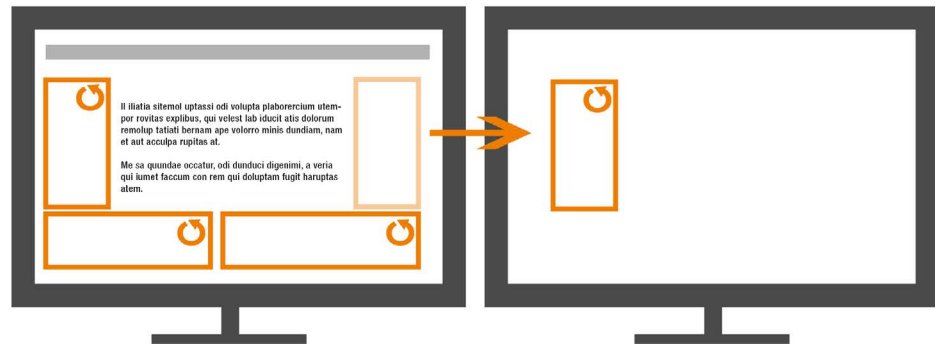
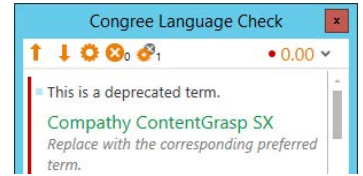
## ■ Configure

### ... Your Congree Panels According to Your Needs

If you do not need a Congree panel temporarily, you can quickly hide it. You can restore the panel via "View" - "Congree".



The Congree integration in Adobe® FrameMaker® supports flexible detachment, repositioning, and docking of Congree panels in the text editor. Thus, you can organize your panels as you wish, stack them, or even move them to another monitor, e.g. in order to maximize the editing area:

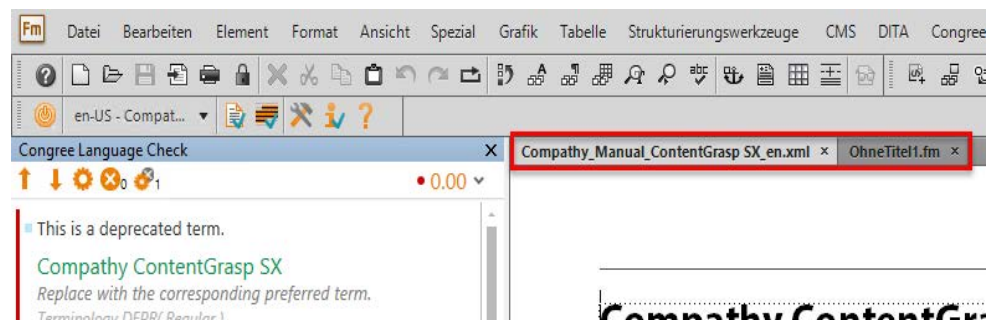


» Moving Congree panels to another monitor

## ■ Work

### ... with Several Opened Documents

Adobe® FrameMaker® allows concurrent operation in different documents arranged in tabs. Congree supports this mode of operation by allowing you to work concurrently with Congree in multiple Adobe® FrameMaker® tabs in different contexts.



An overview of all supported versions and system requirements of the plugin is available in the manual "System Requirements and Installation Scenarios".

**congree**