

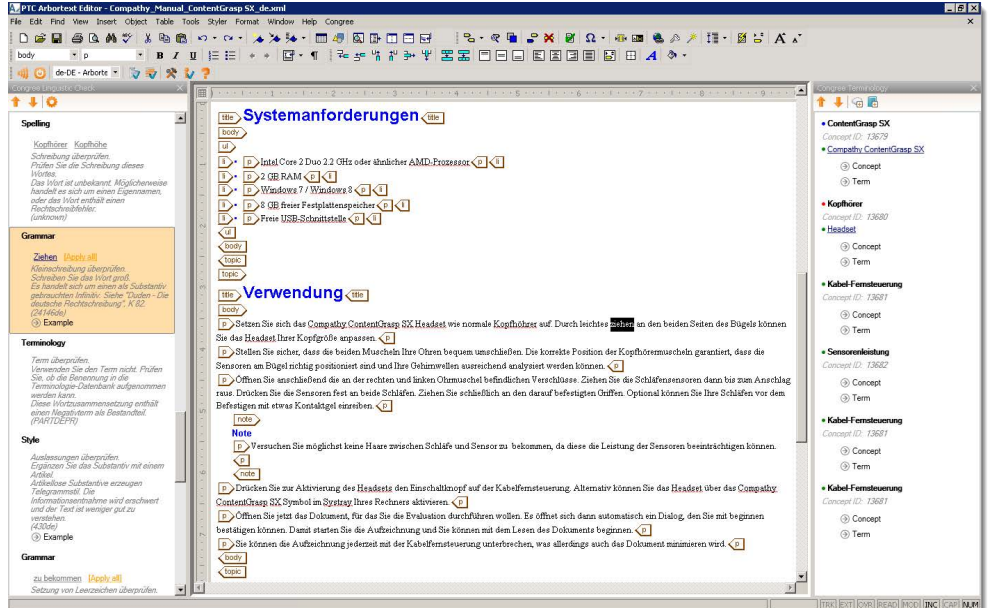
Congree for PTC® Servigistics Arbortext® Editor™

Our Philosophy

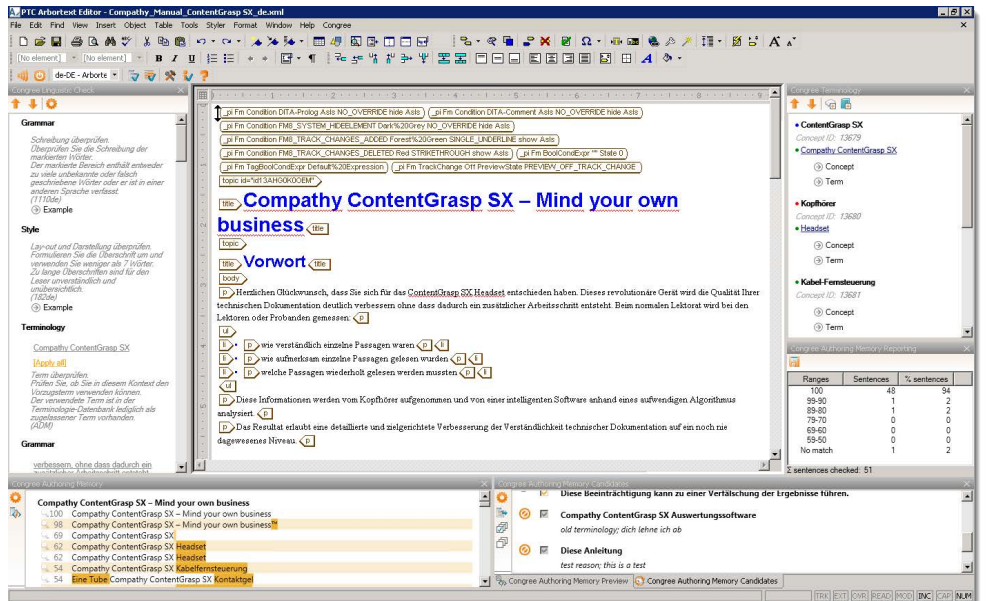
Congree is available as a plugin for various text editors. Congree blends in perfectly with the user interface of the text editors. At the same time, the program functions and basic operating concept remain consistent and are standardized in all text editors. In this way, you can always expect the same Congree quality, regardless of which text editor you use. An overview of all supported versions and system requirements of the plugin is available in the manual "System Requirements and Installation Scenarios".

Overview Based on PTC® Servigistics Arbortext® Editor™ 6.1

Congree fits in seamlessly in your PTC® Servigistics Arbortext® Editor™ as a plugin. The Congree functionality is activated as soon as a document is opened.



» Example application scenario: Language Check and Terminology Research



» Display of additional Congree functions

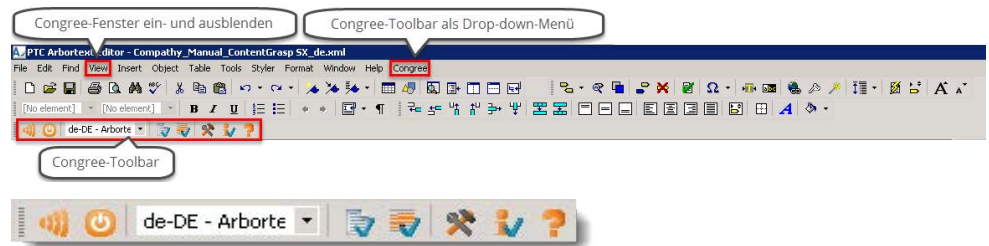
Integrate

... Congree in the PTC® Servigistics Arbortext® Editor™ Toolbar

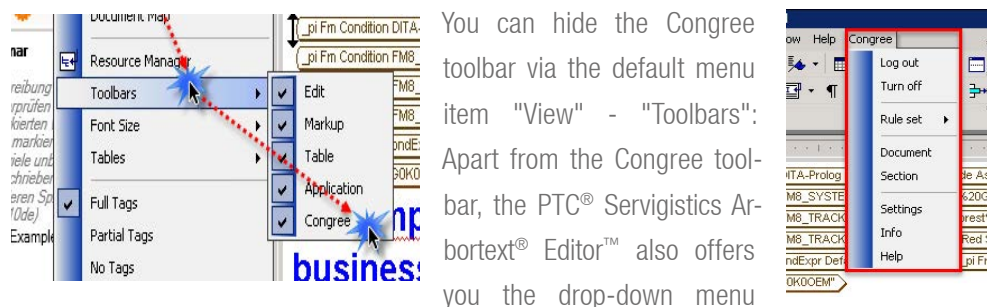
Following the installation of Congree, the default PTC® Servigistics Arbortext® Editor™ toolbar will feature three additional elements:

- » The classic Congree toolbar
- » The drop-down menu "Congree" with toolbar functionality
- » The menu subitem "Congree" in the "View" menu

Using the Congree toolbar, you can switch Congree on and off, log in and out, select rule sets for the check, check text, and configure your Congree Authoring Client.

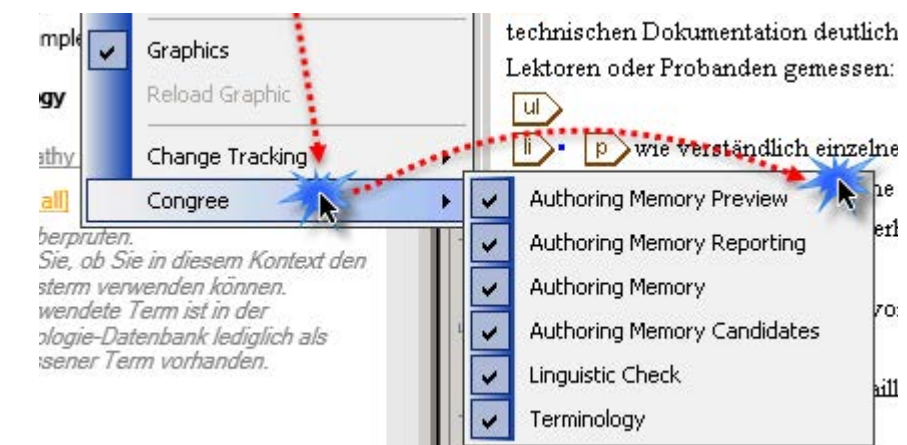


- » The Congree toolbar



You can hide the Congree toolbar via the default menu item "View" - "Toolbars": Apart from the Congree toolbar, the PTC® Servigistics Arbortext® Editor™ also offers you the drop-down menu

"Congree" for the operation: You can flexibly show and hide all Congree panels in accordance with your workflows and irrespective of your duties. This can be done by means of the additional menu item "Congree" in the drop-down menu "View" of your PTC® Servigistics Arbortext® Editor™.



■ Configure

... Your Congree Panels According to Your Needs

If you do not need a Congree panel temporarily, you can quickly hide it. The Congree integration in PTC® Servigistics Arbortext® Editor™ supports flexible detachment, repositioning, and docking of Congree panels in the text editor. Thus, you can organize your panels as you wish, stack them, or even move them to another monitor, e.g. in order to maximize the editing area:



» Docking and repositioning Congree panels

■ Work

... with Several Opened PTC® Servigistics Arbortext® Editor™ Instances

Congree for PTC® Servigistics Arbortext® Editor™ operates across separate windows. Thus, you can work with Congree concurrently in several instances of PTC® Servigistics Arbortext® Editor™ in different contexts.

■ PTC® Servigistics Arbortext® Editor™

... and PTC® Windchill

PTC® Servigistics Arbortext® Editor™ can be used not only as a standalone text editor, but also in the context of the product lifecycle management software PTC® Windchill®. This means that you can also use Congree in a PTC® Servigistics Arbortext® Editor™ that is integrated in PTC® Windchill®.

An overview of all supported versions and system requirements of the plugin is available in the manual "System Requirements and Installation Scenarios".