

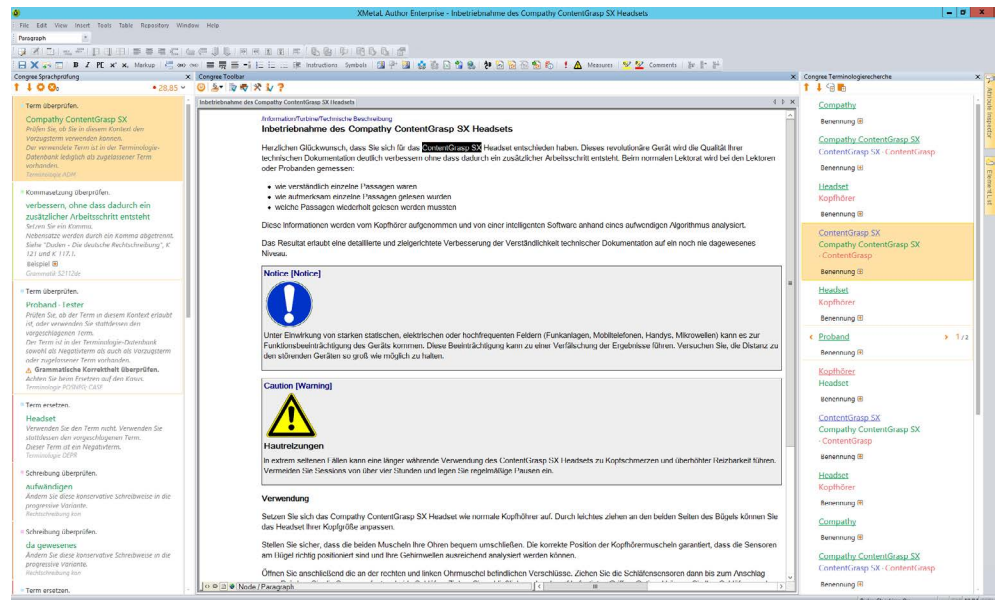
# Congree for SCHEMA ST4

## How the Integration Works

## Example: JustSystems XMetaL® Author Enterprise with SCHEMA ST4

## Benefits

Using SCHEMA ST4, content can be created directly in Microsoft® Word, JustSystems XMetaL® Author Enterprise, or Adobe® FrameMaker®. Congree interacts with these integrated editors: Congree can be connected to SCHEMA ST4 by integrating a Congree plugin in the editors supported by SCHEMA ST4. Congree can be used without any restrictions in the context of SCHEMA ST4, as the program functions and the basic operating concept of Congree are uniform and consistent for all supported editors. SCHEMA ST4 is available with a standard configuration or with an expanded configuration (ST4 Solution). Congree supports the standard software. For the use in connection with ST4 Solutions, Congree can be integrated within the scope of a project.



» Utilization scenario: Language Check and Terminology Research

## ... of Using Congree in Conjunction with SCHEMA ST4

Congree is a professional author assistance tool that integrates directly in your accustomed work environment. The terminology component assists you in using specialized terms correctly. Additionally, the Congree Linguistic Engine (developed at the IAI Saarbrücken) delivers a comprehensive Language Check that displays spelling, grammar, terminology, abbreviation, and style errors. You can easily correct these with the help of correction proposals. The linguistic rule set can be configured for various document types. We can also implement individual rules for you in the context of customer-specific extensions.

The Congree Authoring Server is scalable and thus supports the editorial work in small, medium-sized, and large enterprises. The integrated Congree Health System for monitoring the individual components reduces the administrative overhead for hassle-free operation.

## Language Check

Apart from the spelling, terminology, and grammar, the rule-based linguistic component also checks the style, e.g. the compliance with maximum sentence lengths. Predefined rule sets cover most application cases; additional company-specific rules can be supplemented as needed. The Language Check is currently available for English and German.

## Terminology Component

The terminology component serves as a reference work and delivers definitions and usage information on specialized terms, including preferred terms, admitted terms, and deprecated terms. Avoiding the proliferation of unwanted variants not only increases the consistency and comprehensibility of the text, but also facilitates the indexing and cuts translation costs. The terminology component is currently available for English and German.

## Using Congree in SCHEMA ST4

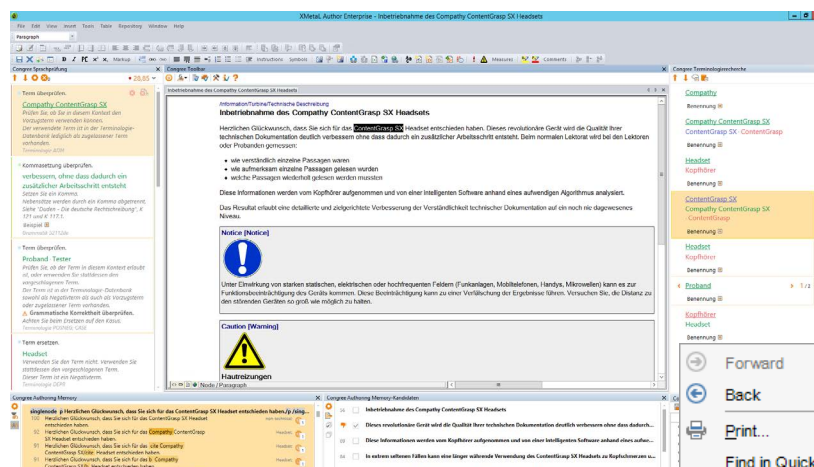
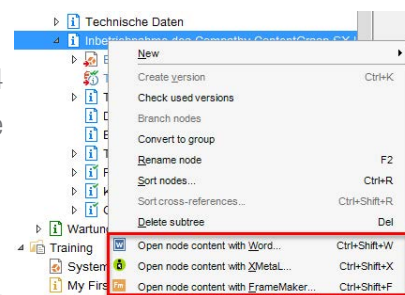
The following functions are verified in connection with Congree:

### 1) Open node

To check and edit documents from within SCHEMA ST4 with Congree, they need to be opened as nodes in the ST4 client.

### 2) Check, save, and close document

After logging in to Congree, text can be checked and edited in the opened editor (via the Congree toolbar). To apply the changes after the editing, save the document via the SCHEMA toolbar and close it.



### 3) Update node in SCHEMA ST4

The nodes need to be updated in order to see the changes made and saved in the editor in the ST4 client ("Quick View").

